



## DEPARTMENT OF CHILD AND ADOLESCENT MEDICINE



**KARAMAN PAGHAVA**  
**EMERITUS**

---



**PROFESSOR TINATIN KUTUBIDZE**  
**HEAD OF DEPARTMENT**

---



**MARINE GAGOSHIDZE**  
**ASSOCIATE PROFESSOR**

---



**IRINE KORINTELI**  
**ASSOCIATE PROFESSOR**

---

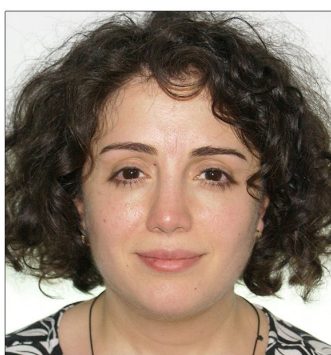


## DEPARTMENT OF CHILD AND ADOLESCENT MEDICINE



**IRMA KORINTELI**  
**ASSOCIATE PROFESSOR**

---



**MARIAM GHUGUNISHVILI**  
**ASSISTANT PROFESSOR**

---